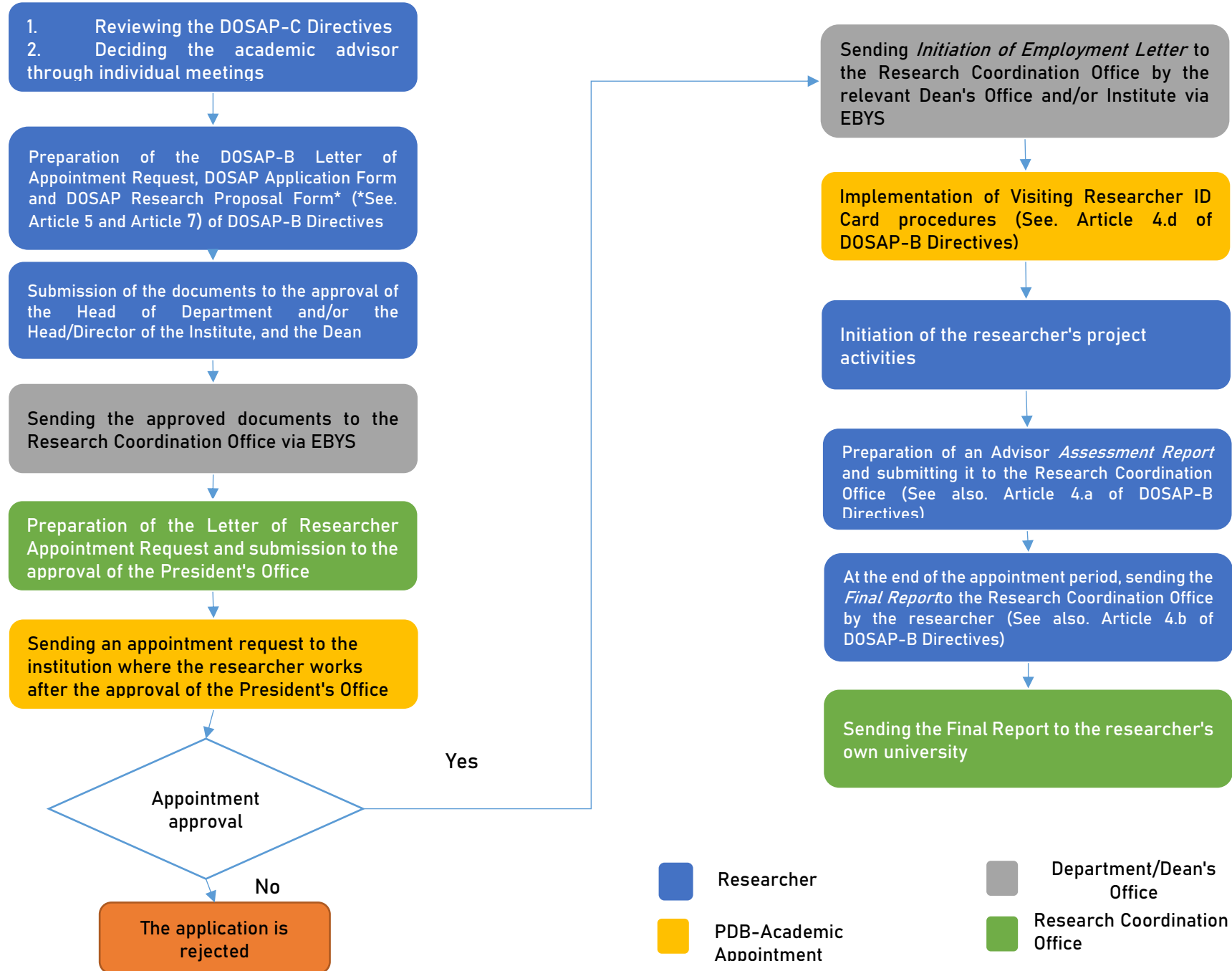


POSTDOCTORAL RESEARCH PROGRAM (DOSAP-B) PROCEDURES



POSTDOCTORAL RESEARCH PROGRAM (DOSAP-B) PROCEDURES

Obligations of the DOSAP-B Researchers

- They must review the DOSAP-B Directives.
- DOSAP-B researchers have to comply with the rules and regulations of METU.
- Researchers who are appointed as Postdoctoral Researchers have to continue their research based on the work plan they draw up with their advisors.
- DOSAP researchers are expected to work on a full-time basis. However, if it is approved by the relevant faculty member, researchers can be appointed for certain days of the week under DOSAP-B.
- In the academic publications, researchers must specify METU as the institution where the study has been conducted. If requested, they can also specify the address of their own institution or university.
- At the end of the DOSAP-B appointment period, researchers have to draw up a final report about the project that they are working on and have it approved by the unit to which they are working at (Department/Institute/Center), and then send it to the Research Coordination Office. After the submission of this report, a *approved* certificate, which shows that the researcher successfully completed the DOSAP-B program, will be issued. This document is not issued for Researchers who do not submit a final report. Please see <http://dosap.metu.edu.tr/tr/formlar> for the template of the final report.