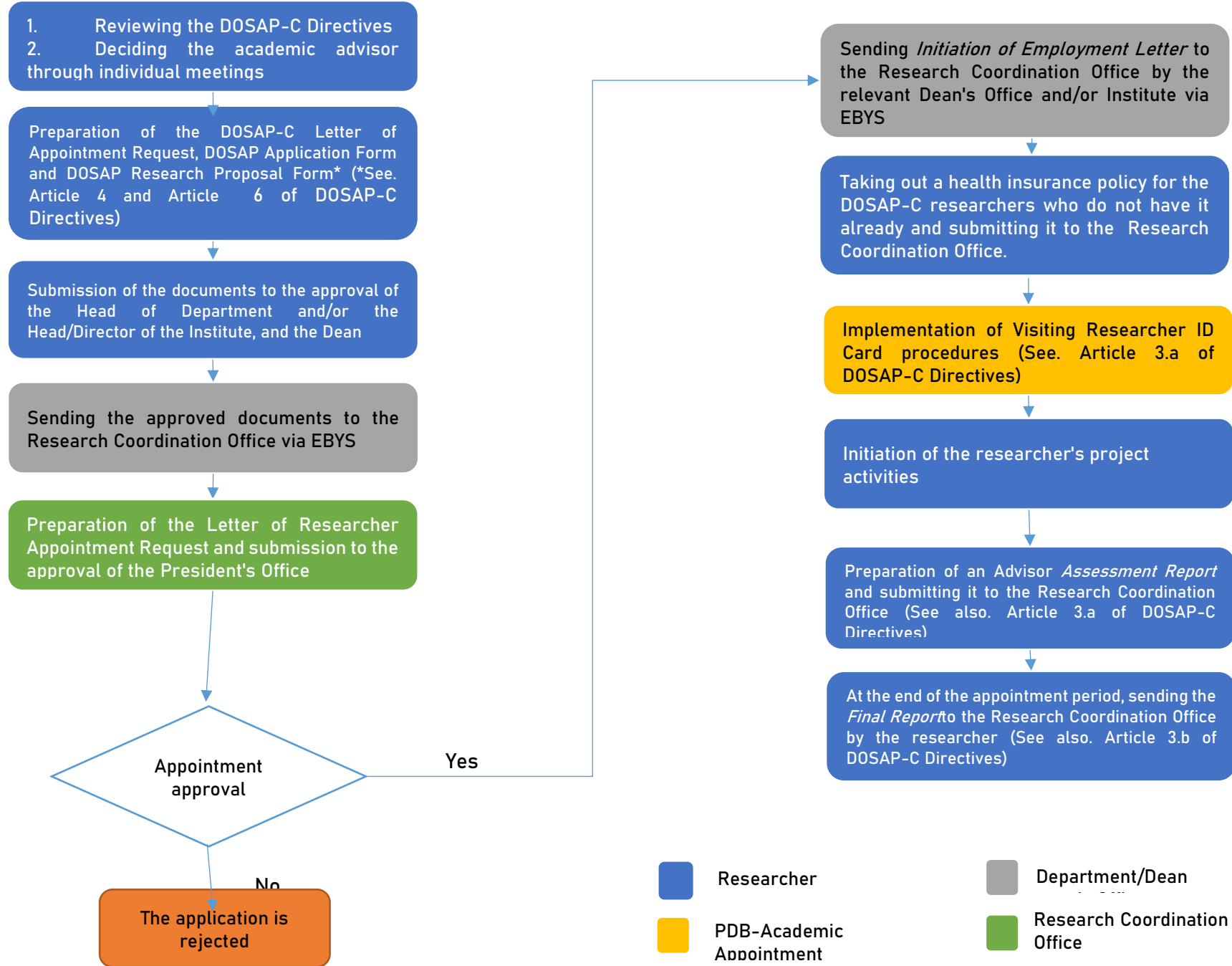


POSTDOCTORAL RESEARCH PROGRAM (DOSAP-C) PROCEDURES



POSTDOCTORAL RESEARCH PROGRAM (DOSAP-C) PROCEDURES

Obligations of the DOSAP-C Researchers

- They must review the DOSAP-C Directives.
- DOSAP-C researchers have to comply with the rules and regulations of METU.
- The DOSAP-C researchers who do not have a health insurance policy have to get it and submit it as a document before they start to work on their project at METU. DOSAP-C Researchers cannot benefit from METU Health Center.
- DOSAP-C researchers have to continue their research activities based on the work plan they draw up with their advisors.
- DOSAP-C researchers are expected to work on a full-time basis. However, if it is approved by the relevant faculty member, researchers can be appointed for certain days of the week under DOSAP-C.
- In the academic publications to be published as a result of the project, researchers must specify METU as the institution where the study has been conducted, along with the address of their own institutions/universities. If requested, they can also specify the address of their own institution or university.
- If products that may constitute the subject of an intellectual right such as patents, utility models, industrial design and know-how are created at the end of the project, the obligations applicable to METU faculty members also apply to the DOSAP-C researchers.
- At the end of the DOSAP-C appointment period, researchers have to draw up a final report about the project that they are working on and have it approved by the unit to which they are working at (Department/Institute/Center), and then send it to the Research Coordination Office. After the submission of this report, an *approved* certificate, which shows that the researcher successfully completed the DOSAP-C program, will be issued. This document is not issued for Researchers who do not submit a final report. Please see <http://dosap.metu.edu.tr/tr/formlar> for the template of the final report.